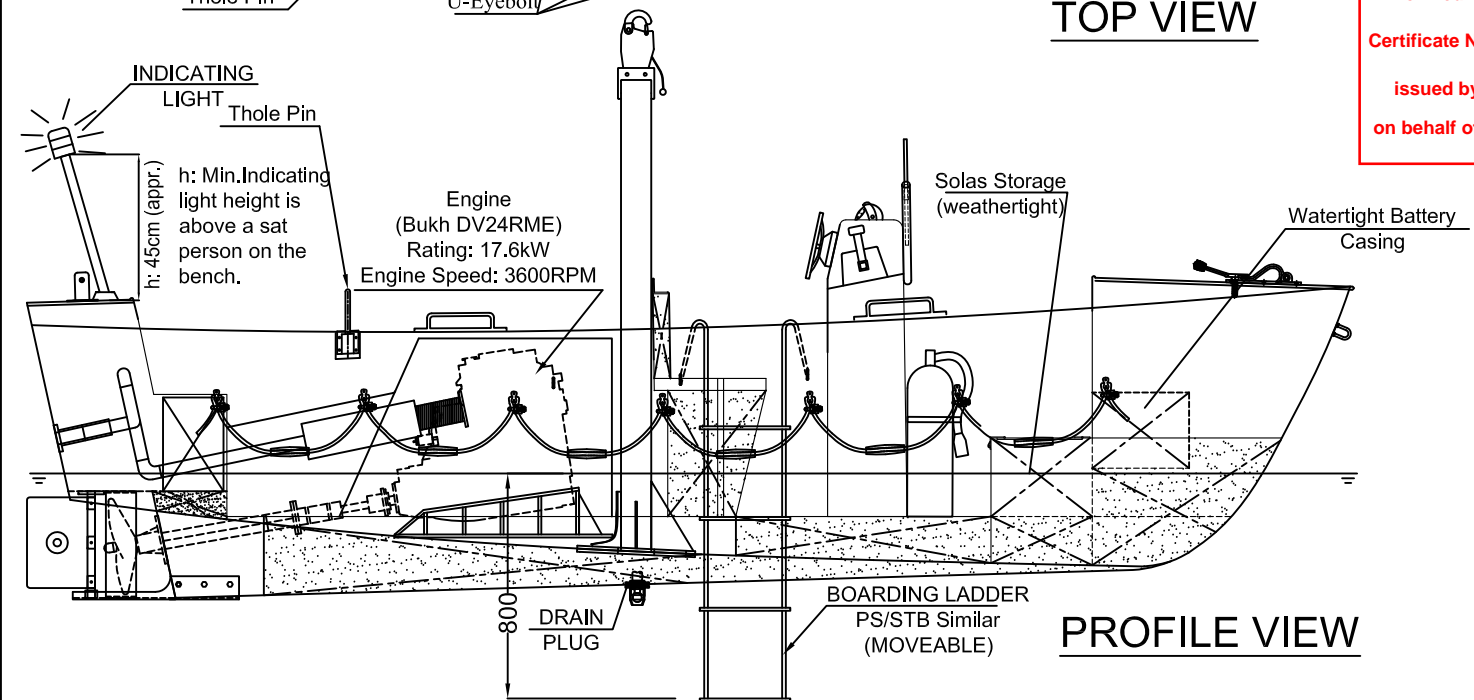


TOP VIEW

Archived in technical file of
 Certificate N° 19043/D0.MED....
 issued by Bureau Veritas
 on behalf of French Authorities.

Loa = 4.52 m
 Boa = 1.81 m
 Hoa = 2.03 m
 Weight = 925 kg (Without persons-fully equipped)
 Weight = 1420 kg (Full loaded-with 6 persons)



PROFILE VIEW

Rev. No.	REV.	Date
7		
6	Boarding ladder added.	07.04.2016
5	Battery charging plug added.	30.05.2013

GEPA FIBERGLASS INDUSTRY & TRADE CO. INC.
 Aydintepe Mah. Yakamoz Sok. No:10, Aydintepe
 34947 TUZLA / ISTANBUL / TURKEY

G-RB3 Type, RESCUE BOAT

GENERAL ARRANGEMENT	DATE
	2006

CAD/CAE	Ç. Burak YILDIRIM	DRAWING NO.
DESIGN AND CONT.	Prof. Dr. Teoman ÖZALP	
SCALE	CLASS	REV.
1/25 (A3)	BV	08 (14.07.2016)

HULL LAMINATION PLAN

- Gel coat 2 Layers
- 2 Layers of----- 450gr/m2 Chopped Strand Matt
- 1 Layer of----- 800gr/m2 Woven Rowing
- 2 Layers of----- 450gr/m2 Chopped Strand Matt

Attn.=Control Desk, Seats, Engine Casing and Aft Seat lamination plans are same as the inner hull lamination plan.

Polyurethane foam strips which are covered with three layers of 450 gr/m2 chopped strand matt, used as reinforcement.

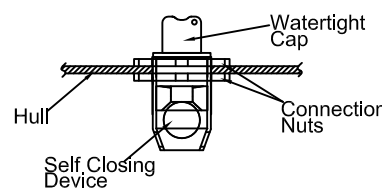
INNER HULL LAMINATION PLAN

- Gel coat 2 Layers
- 1 Layer of----- 300gr/m2 Chopped Strand Matt
- 1 Layer of----- 450gr/m2 Chopped Strand Matt
- 1 Layer of----- 800gr/m2 Woven Rowing
- 1 Layer of----- 450gr/m2 Chopped Strand Matt

For reinforcement, additional chopped strand matt layers are used in certain areas.

Glassfibre \approx 1/2 (Weight ratio)
 Polyester

DRAIN PLUG DETAIL



- * Colour of the Rescue Boat is orange in compliance with LSA Code 1.2.2.6 (POLIYA ORANGE 53)
- * Each seating position is indicated with painted numbers compliance with LSA 4.4.2.3
- * Rubber material is EPDM. (See the drawing: G-RB3-06-Fender Connection Detail)
- * Boarding ladder is tied to the U-Eyebolt with knots
- Drain plug is fitted near the lowest point in the hull (LSA Code 4.4.7.1).