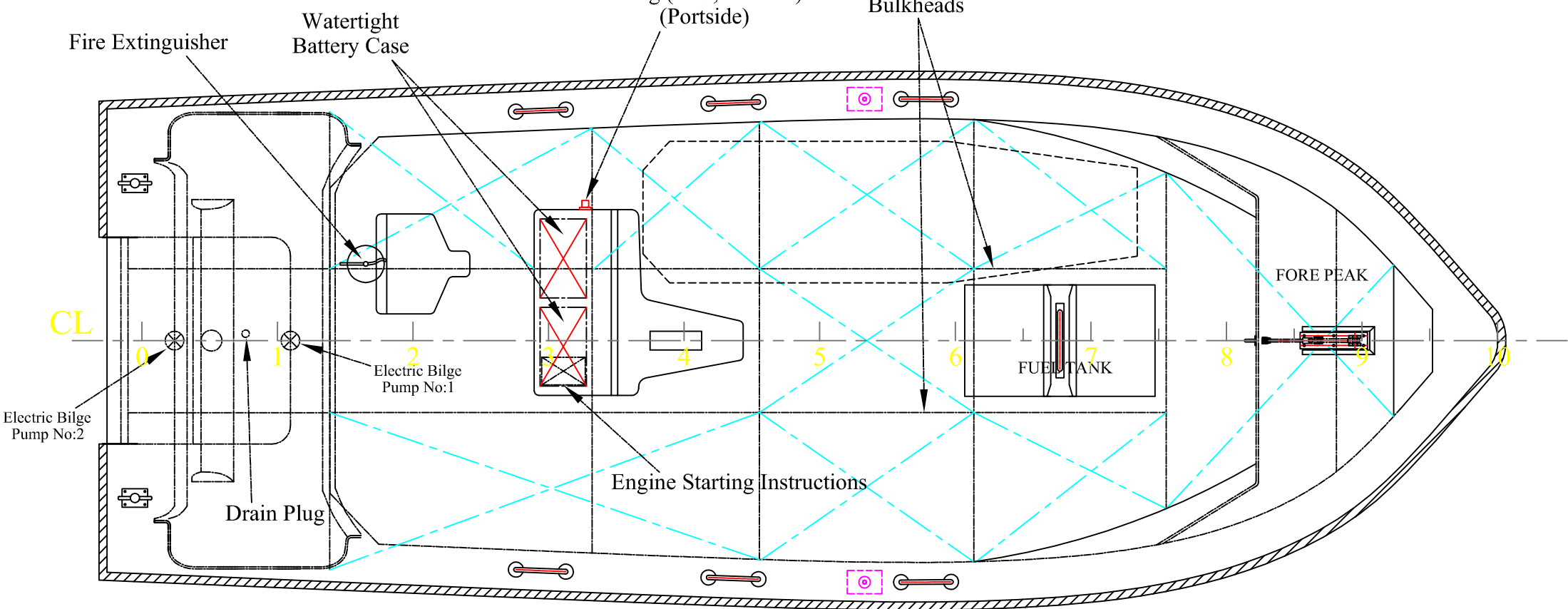
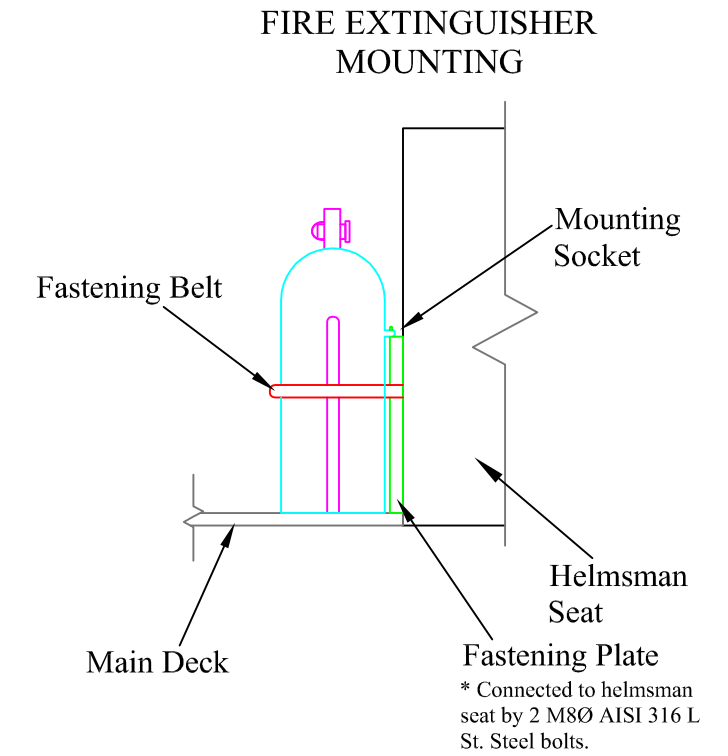
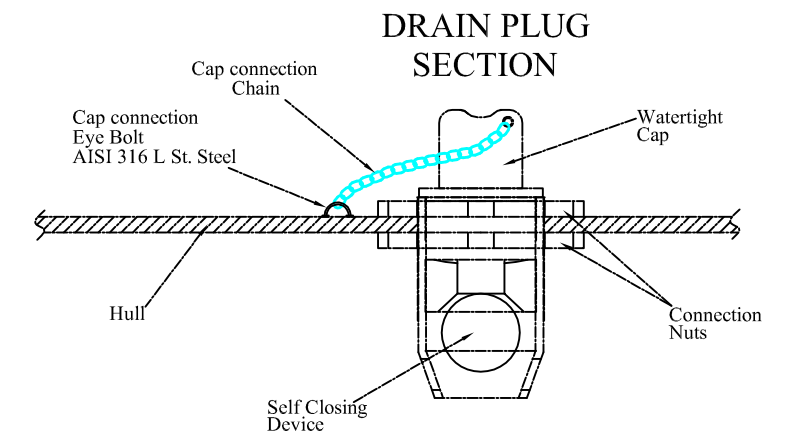
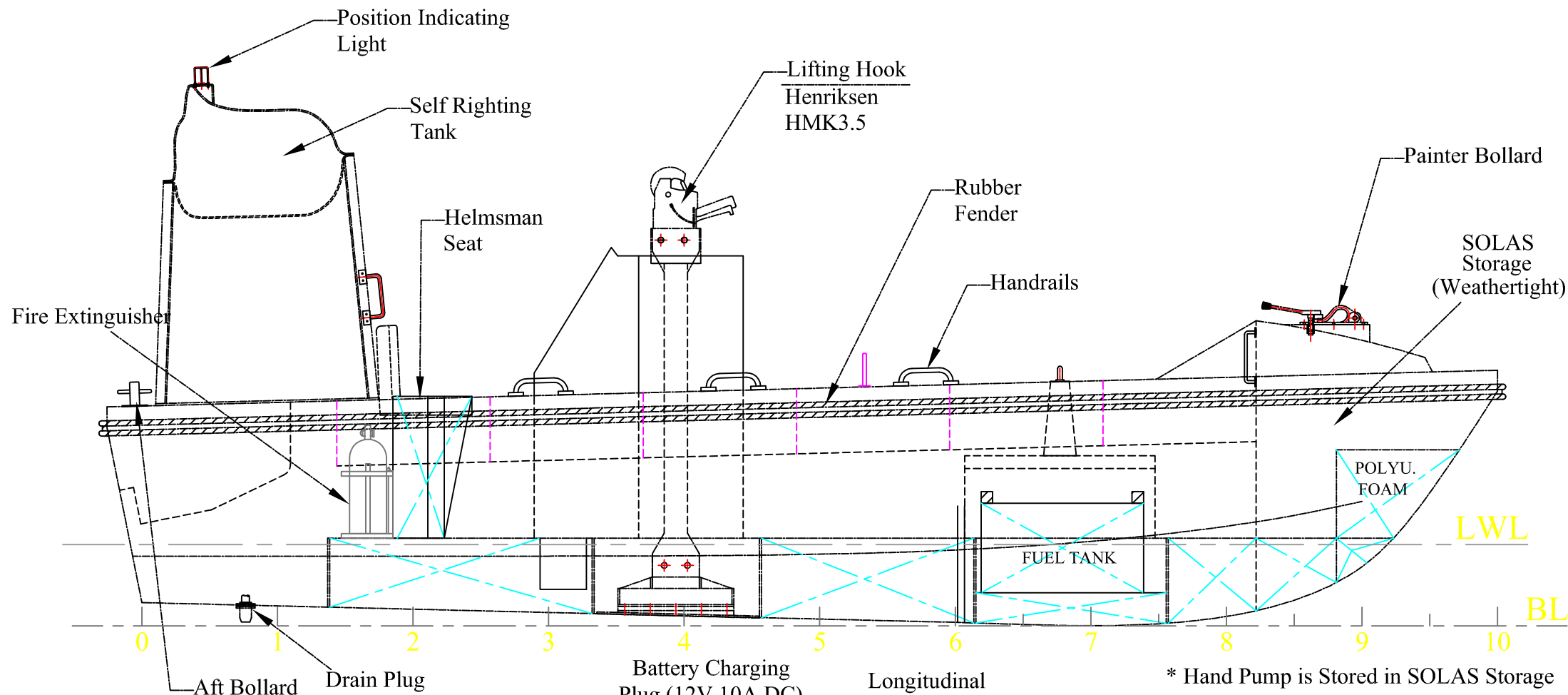


\* Boat Color: Polipigment 53 ORANGE



Lo.a. = 6.46 m (inc. Engines)  
 L(hull) = 6.01 m (inc. Fenders)  
 Bo.a. = 2.30 m (inc. Fenders)  
 B(hull) = 2.25 m  
 D(midship) = 1.04 m  
 Height o.a. = 2.33 m  
 WEIGHT = 1255 kg. (Fully Loaded Without Persons)  
 WEIGHT = 1998 kg. (Fully Loaded With Persons)

**Fire Extinguisher**  
 Manufacturer: Kurtarrir  
 Type: S6  
 Capacity: 6 kg

**Electric Bilge Pumps**  
 Manufacturer: Attwood  
 Type: 7570 LPH  
 Pump Model: 10/2000 - GPH

**ENGINE:**  
 Manufacturer: Mercury  
 Type: 60 ME Outboard Petrol Engine

Note: for bailing, 2 electric bilge pumps present on the boat, one of which starts - stops automatically, the other one is manually controlled from the control panel. There's also one hand pump present on the boat.

Rev. No.	REV.	Date
3	Fire extinguisher mounting details added.	02.08.2012
2	Frame numbers added, thole pins added, fore seat revised, fire extinguisher added, helmsman seat revised.	12.07.2012
1	Battery charging plug updated, transverse stiffeners removed, drain plug cap connection added.	13.06.2012

**GEPA FIBERGLASS INDUSTRY & TRADE CO. INC.**  
 Aydıntepe Mah. Yakamoz Sok. No:10, Aydıntepe  
 34947 TUZLA / ISTANBUL / TURKEY

G-FRB2-O Type, FAST RESCUE BOAT

GENERAL ARRANGEMENT			DATE
			2012
CAD/CAE	Doğanay ÖZDÖL	DRAWING NO.	
DESIGN AND CONT.	Prof. Dr. Teoman ÖZALP	G-FRB2-O-01	
SCALE	CLASS	REV.	
	BV	03-08/2012	