

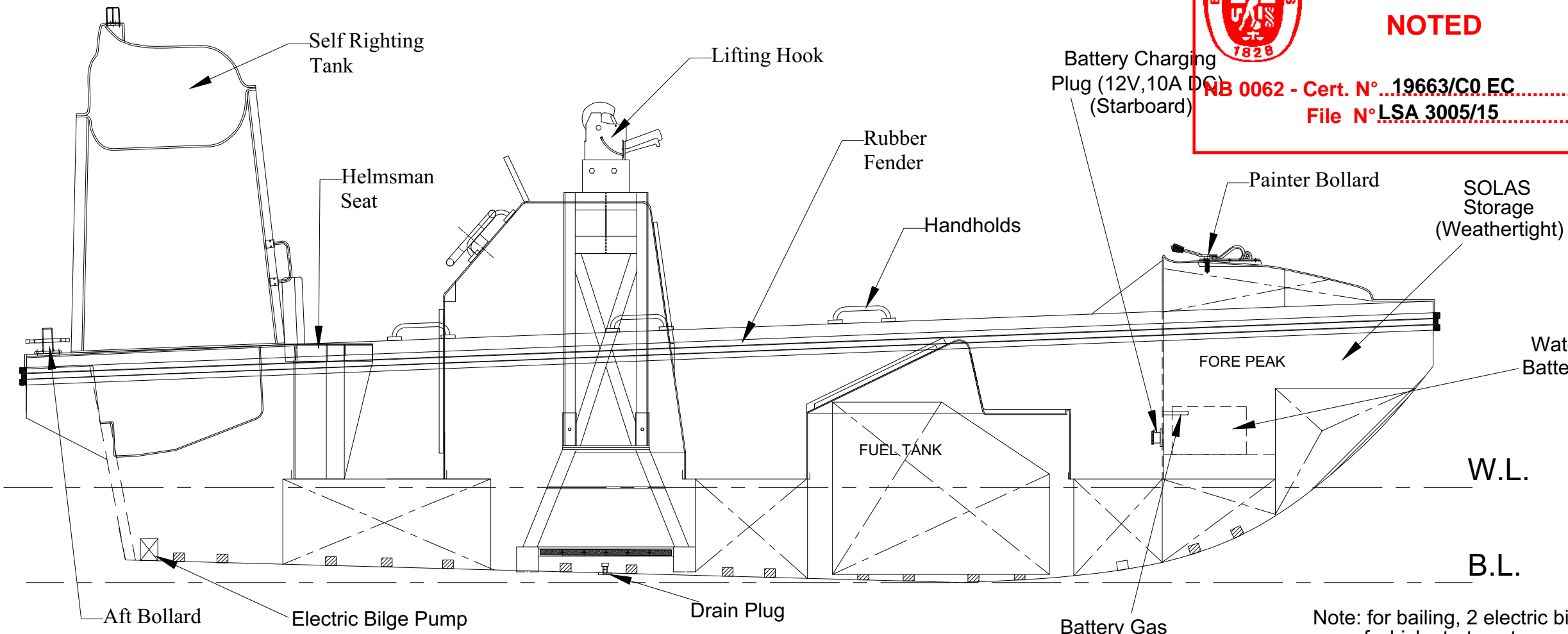
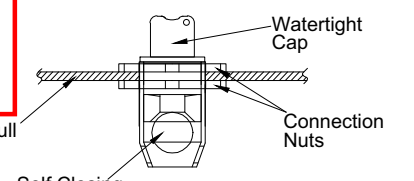


**DIRECTIVE 96/98/EC**  
**Marine Equipment**

**NOTED**

**NB 0062 - Cert. N° 19663/C0 EC**  
**File N° LSA 3005/15**

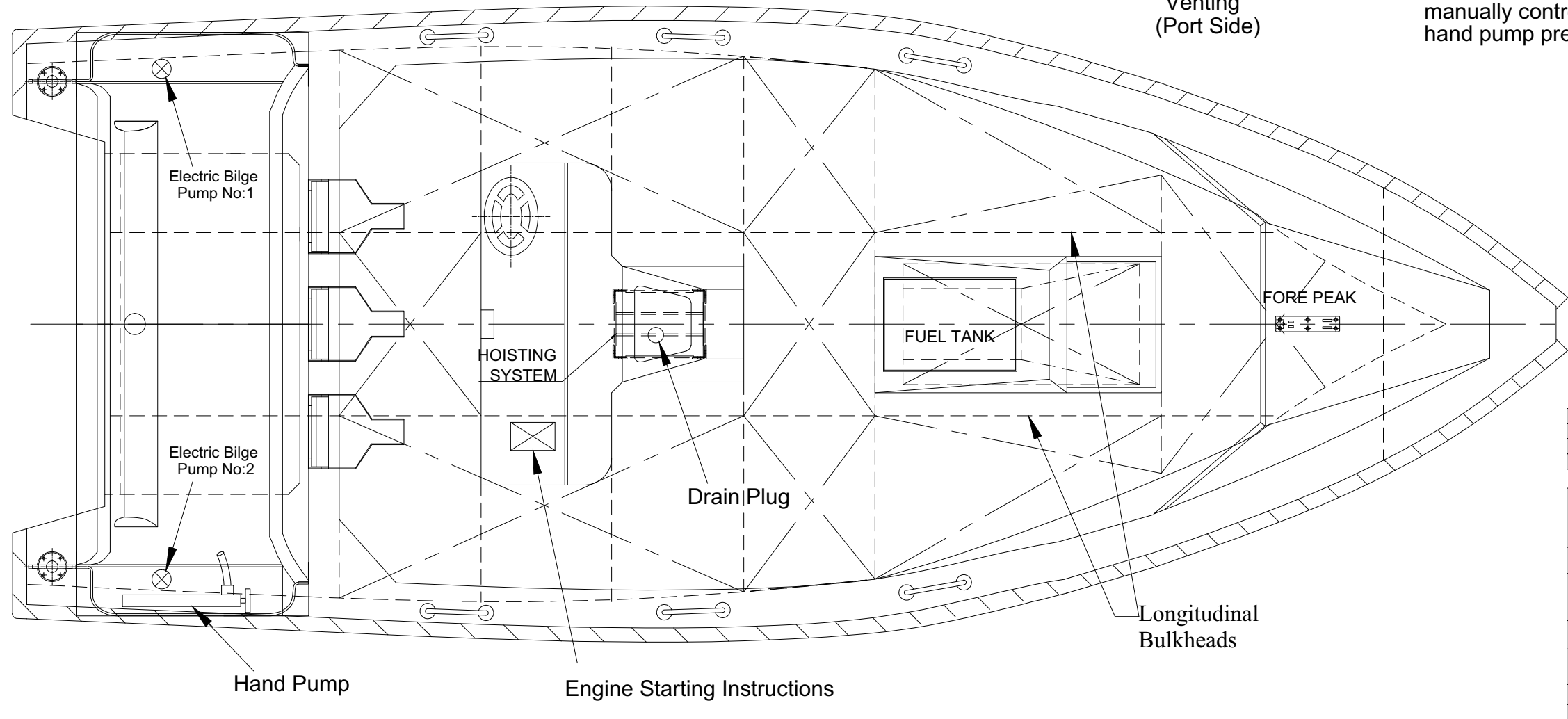
**DRAIN PLUG SECTION**



W.L.  
B.L.

Electric Bilge Pumps  
Manufacturer: Attwood  
Type: V900  
Pump Model: 4209

Note: for bailing, 2 electric bilge pumps present on the boat, one of which starts - stops automatically, the other one is manually controlled from the control panel. There's also one hand pump present on the boat.



Lo.a. =6.80 m.(inc. Engines)  
L(Hull) =6.57 m.  
Bo.a. =2.62 m.(inc. Fenders)  
B(Hull) =2.57 m.  
D(Midship)=1.19 m.  
Height o.a. =2.79 m.  
WEIGHT = 2240 kg.(Fully Loaded-Without Persons)  
WEIGHT = 3478 kg.(Fully Loaded-With Persons)

Rev. No.	REV.	Date
5	Hook leg supports updated.	24.08.2012
4	Seat positions revised on top view	14.03.2012
3	Fore bulkhead position corrected, drain plug section added	30.12.2011

**GEPA FIBERGLASS INDUSTRY & TRADE CO. INC.**  
Aydintepe Mah. Yakamoz Sok. No:10, Aydintepe  
34947 TUZLA / ISTANBUL / TURKEY

G-FRB1-O Type, FAST RESCUE BOAT

GENERAL ARRANGEMENT PLAN			DATE
			2007
CAD/CAE	Alper ETİKSAN	DRAWING NO.	
DESIGN AND CONT.	Prof. Dr. Teoman ÖZALP	G-FRB1-O-01	
SCALE	CLASS	REV.	
	BV	05-08/2012	