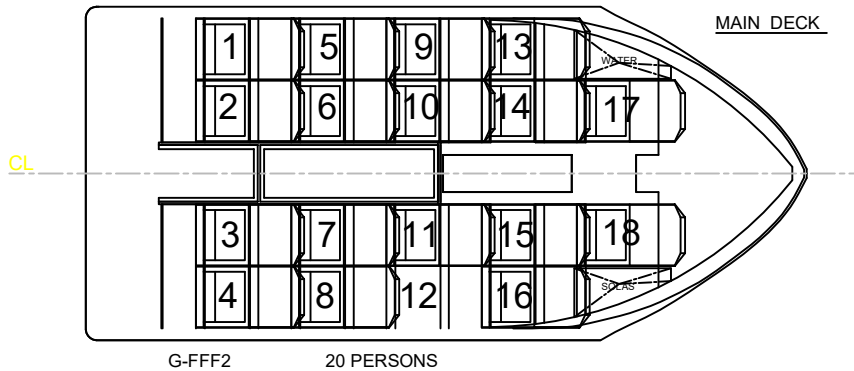
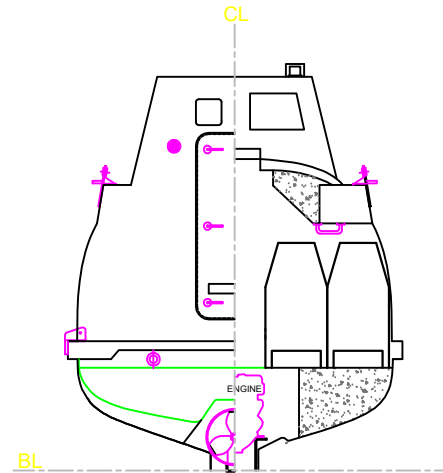
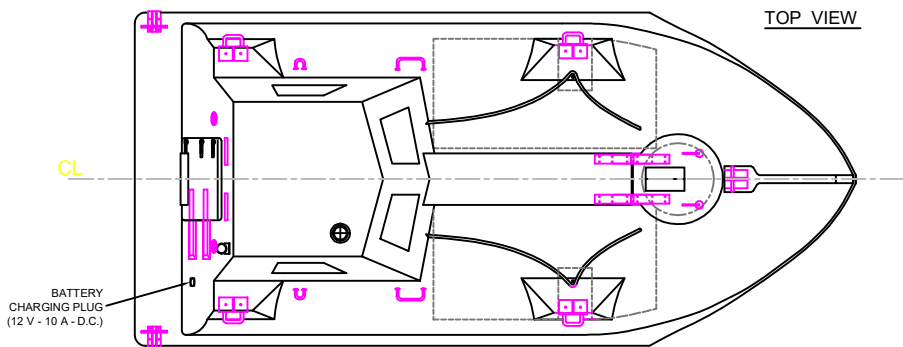


MAIN DIMENSIONS

| | |
|-------------------|--|
| L oa | 5.60 m |
| Breadth | 2.62 m |
| Height | 3.05 m |
| Capacity | 20 persons |
| Engine | DIESEL |
| Power | 24 HP-3600 RPM |
| Speed | 6 Knots |
| Weight (Unloaded) | 3235 kg |
| Weight (Loaded) | 4885 kg |
| Color | Poliya Orange 53(exteric) İlkalem Green 676(interi) |



| Rev. No. | REV. | Date |
|----------|--|-----------|
| 3 | Color info. is added to main dimensions table. | 28.08.201 |
| 2 | Longitudinal Bulkhead position is revised on section view. | 07.09.201 |
| 1 | Weight (Loaded) revised, battery charging plug added | 04.05.201 |

GEP A FIBERGLASS INDUSTRY & TRADE CO. INC
 Aydıntepe Mah. Yakamoz Sok. No:10, Aydıntepe
 34947 TUZLA / ISTANBUL / TURKEY

G-FFF2 Type, FREEFALL LIFEBOAT

GENERAL ARRANGEMENT PLAN

| | | |
|------------------|---------------|-------------|
| CAD/CAE | Kubilay EYLEN | DRAWING NO. |
| DESIGN AND CONT. | Yasin DOĞAN | G-FFF2-02 |
| SCALE | CLASS | REV. |
| | BV | 03 |

DATE
2000