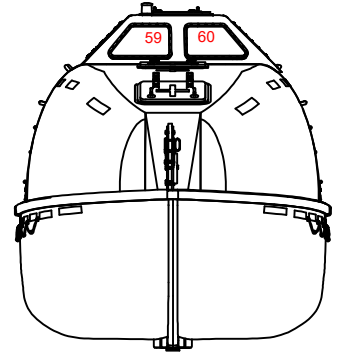
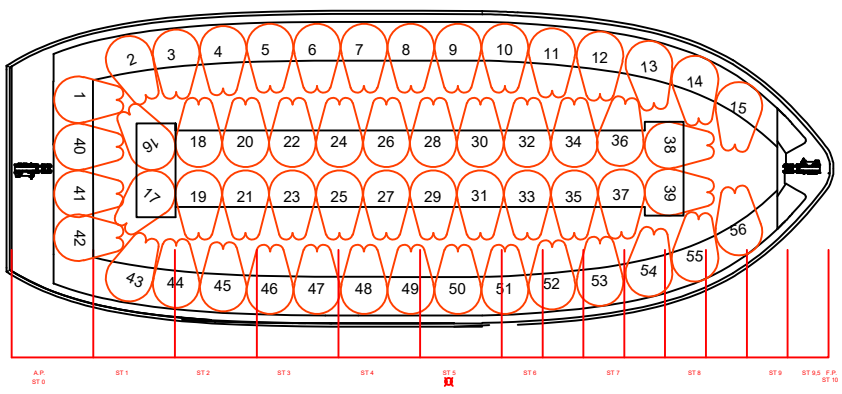
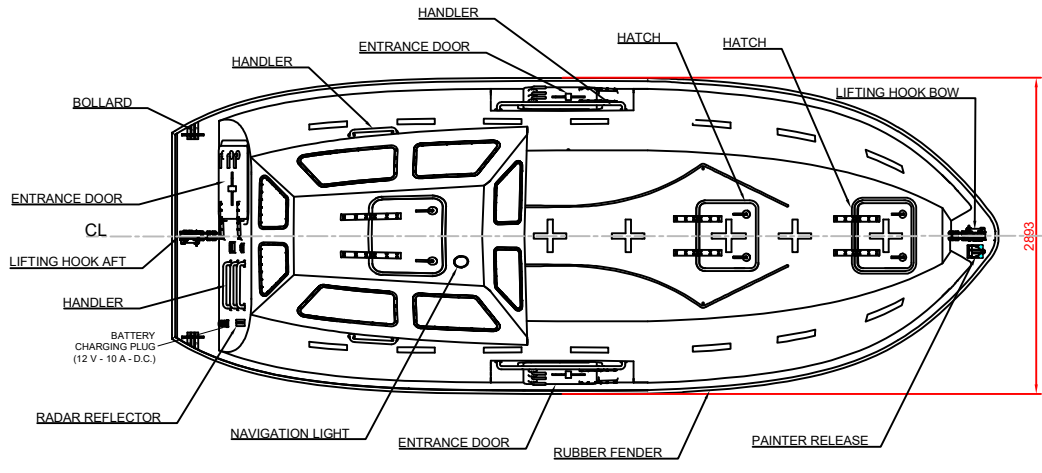
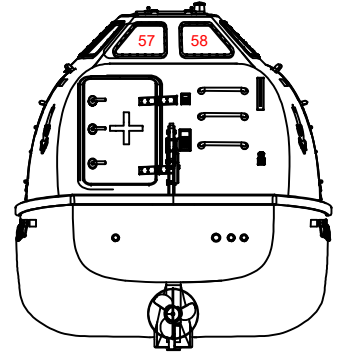


FRONT VIEW



AFT VIEW



GENERAL DIMENSIONS

Lo.a.	7.62 m (inc. Fender)
L (hull)	7.56 m
Bo.a.	2.89 m (inc. Fenders)
Height	3.08 m
Capacity	60 Persons
Engine	BUKH 48 HP
Weight (Unloaded)	4200 kg
Weight (Loaded)	9150 kg
SPEED	6 KNOT

Rev. No.	REV.	Date
3		
2		
1		

GEPA FIBERGLASS INDUSTRY & TRADE CO. INC.  
Aydintepe Mah. Harmandali Sok. No:10, Aydıntepe  
34947 TUZLA / ISTANBUL / TURKEY

G-F8 TYPE TOTALLY ENCLOSED LIFE BOAT		DATE
GENERAL ARRANGEMENT		25.10.2023
CAD/CAE	Salih Ozan UÇAR	DRAWING NO.
DESIGN AND CONT.	Bahadır GÖKÇETEKİN	G-F8K-01
SCALE	CLASS	REV.
	RMRS	02

\*\*\*The Fully Enclosed Lifeboat certificate will be RMRS approved with Polar Code