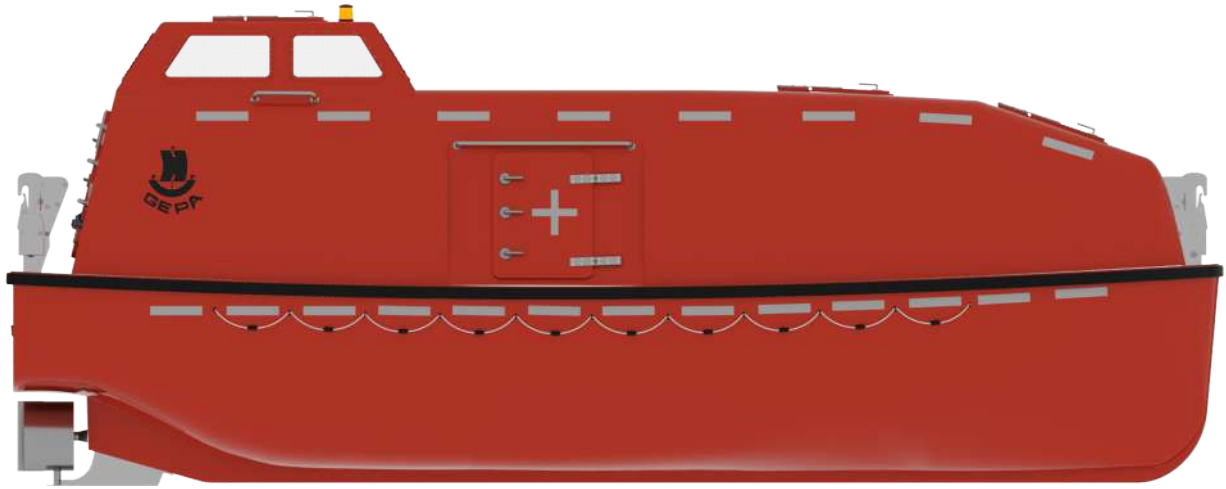




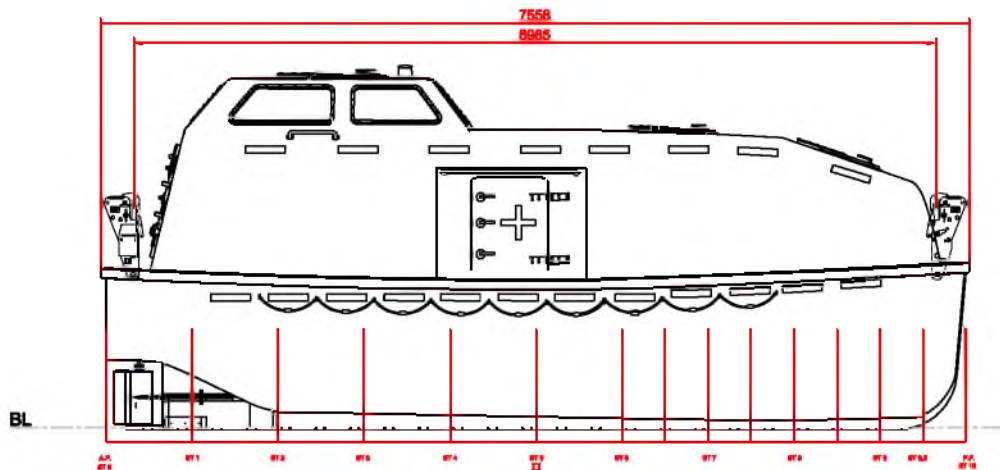
**GEPA - FİBERGLAS SANAYİ ve TİCARET A.Ş.**  
**GEPA - FIBERGLASS INDUSTRY & TRADE CO. INC.**



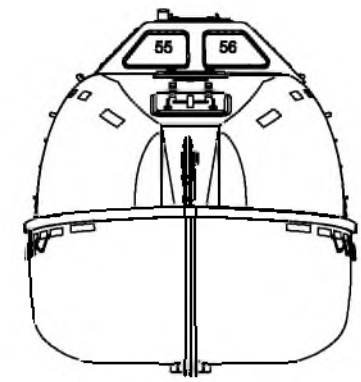
## **G-F8K TOTALLY ENCLOSED LIFE BOAT**

### **MAIN DIMENSION:**

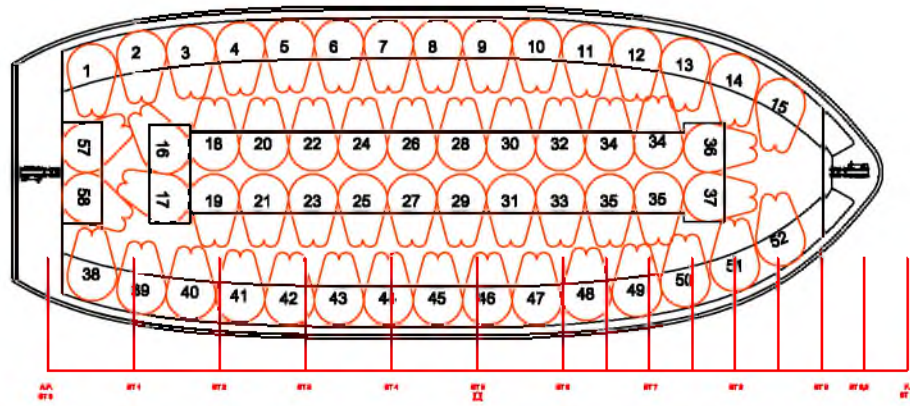
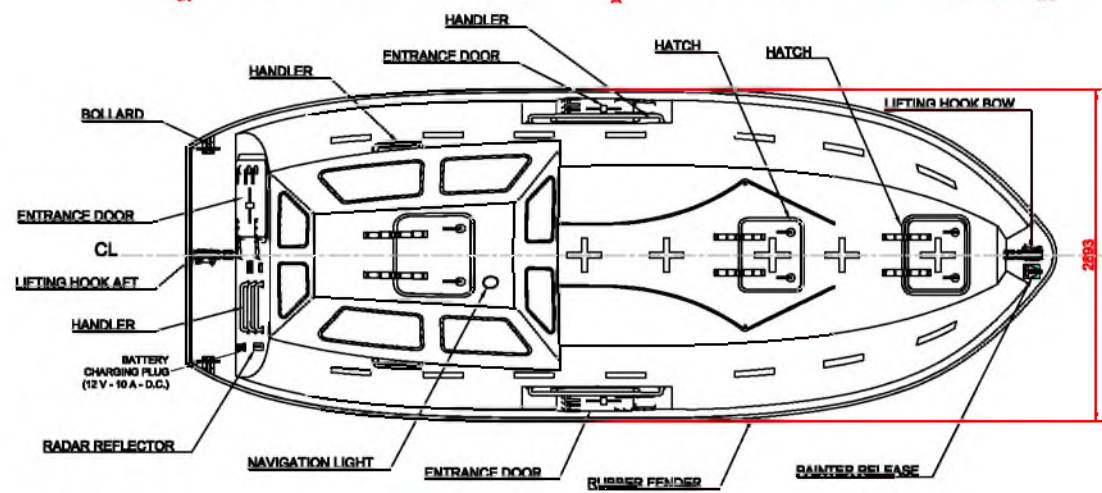
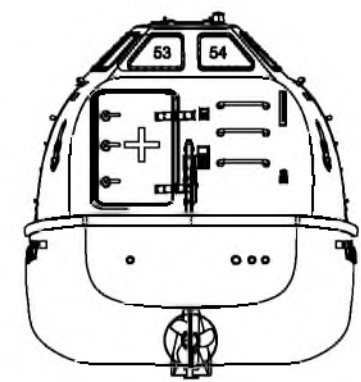
Loa .....	7,55 m (inc. Fender)
Beam .....	2.89 m /inc. Fender)
Capacity .....	60 persons
Engine .....	Diesel
Power .....	48 HP
Speed .....	6 Knots
Displacement .....	9150 kg



**FRONT VIEW**



**AFT VIEW**



**GENERAL DIMENSIONS**

Lo.a.	7.55 m (inc. Fender)
L (hull)	7.48 m
Bo.a.	2.89 m (inc. Fenders)
Height	3.08 m
Capacity	60 Persons
Engine	BUKH 48 HP
Weight (Unloaded)	4200 kg
Weight (Loaded)	9150 kg
SPEED	8 KNOT

Rev. No.	REV.	Date
1		

**GEPA FIBERGLASS INDUSTRY & TRADE CO. INC.**  
 Aydıntepe Mah. Harmandalı Sok. No:10, Aydıntepe  
 34947 TUZLA / ISTANBUL / TURKEY

**G-F8 TYPE TOTALLY ENCLOSED LIFE BOAT**

GENERAL ARRANGEMENT		DATE
		22.02.2022
CAD/CAS	Salih Cema UÇAR	DRAWING NO.
DESIGN AND CONT.	Bahadır GÖKÇETEKİN	G-F8K-01
SCALE	CLASS	REV.
1 : 75		00



**GEPA - FİBERGLAS SANAYİ ve TİCARET A.Ş.**  
**GEPA - FIBERGLASS INDUSTRY & TRADE CO. INC.**





**GEPA - FİBERGLAS SANAYİ ve TİCARET A.Ş.**  
**GEPA - FIBERGLASS INDUSTRY & TRADE CO. INC.**





**GEPA - FİBERGLAS SANAYİ ve TİCARET A.Ş.**  
**GEPA - FIBERGLASS INDUSTRY & TRADE CO. INC.**





**GEPA - FİBERGLAS SANAYİ ve TİCARET A.Ş.**  
**GEPA - FIBERGLASS INDUSTRY & TRADE CO. INC.**

